



**MARTIN POWER**  
**AMF 1**  
 MP AUTOMATIC

**Basic informations and accesories**

AMF - Automatic mains failure

|                             |               |
|-----------------------------|---------------|
| Nominal current In [A]      | 25-125        |
| Contactors in control panel | YES           |
| Voltage system - standard   | TN - S        |
| Standardly placed           | On base frame |
| Main circuit breaker        | In AMF 1      |

**Main tasks**

- Managing stand-by mode in emergency power supply by genset
- Transfer load from mains to genset and back

**Operating modes**

- RESET** - Genset is in blocking state. It don't respond neither to mains failure nor to manual commands from control panel.
- MAN** - Genset is in manual state. It is controlled by buttons on control panel
- AUT** - Genset is in automatic mode. If there is blackout, genset starts and take load. After restore of mains genset leaves the load, cools down and stops.
- TEST** - Genset is in testing mode, which is designed for testing of functionality of backuping systems.



**Available options**

- TEST of genset with load
- Automatic fuel filling device
- Horn
- Potential free command "Engine running"
- Potential free command "Fuel reserve"
- Control of air cooling system
- Remote control panel with TOTAL STOP
- Remote control panel without TOTAL STOP



**Advanced informations**

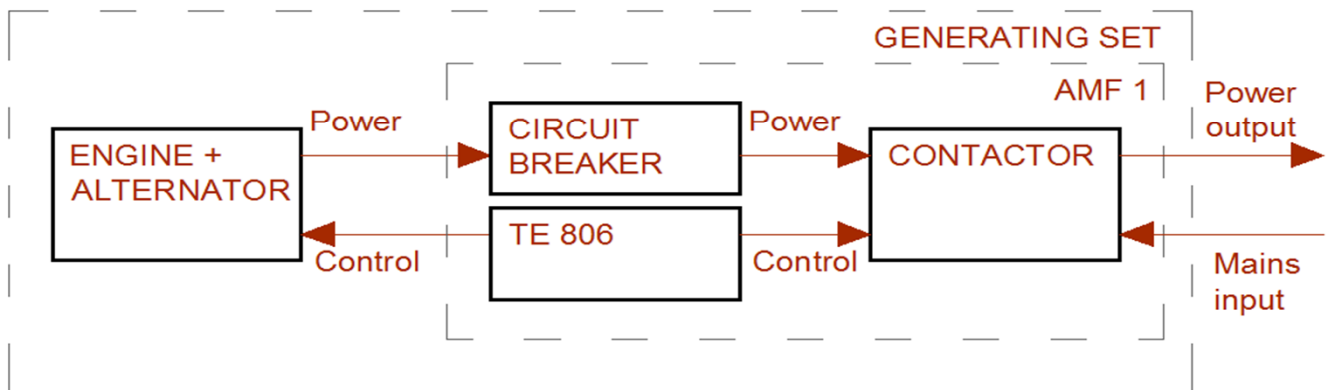
|   |
|---|
| Mechanical protection IP 20/20              |
| Mode RESET, MAN, AUT, TEST                  |
| Automatic periodic test                     |
| Manual control of contactors in MAN mode    |
| Remote start/stop                           |
| Starting battery charger                    |
| Coolant preheater                           |
| Generator voltage – L1 - digital            |
| Generator current L1 – digital **           |
| Mains voltage – L1 - digital                |
| Generator frequency – digital               |
| Generator apparent power [kVA] – digital ** |
| Hours counter - digital                     |
| Fuel level [%/ litres]– analog              |

**Advanced informations**

|  |
|--|
| Starting battery voltage - digital                     |
| Signalization of automatic operation                   |
| Engine running signalization                           |
| Signalization of contactors (mains – generator) status |
| Total stop *   |
| Low oil pressure - protection                          |
| High engine temperature - protection                   |
| Fail to start – protection                             |
| Charger failure / belt break protection                |
| Over / under voltage – protection                      |
| Over / under frequency – protection                    |
| Fuel reserve alarm                                     |
| Potential free command “Common alarm”                  |

\* for genset with air cooled engine is only preparation for external total stop

\*\* only for request for genset with liquid cooled genset



Basic scheme of genset with AMF1

- Other special functions and accessories are available according to customer request
- All pictures are for informational purposes only
- We reserve the right to change the specification without notice